

STRAP 系列



RoHS Compliant & Halogen Free



應用範圍:

充電電池及電池組

鋰電池及電池組

產品特性:

固態片狀式產品

工作電流:

FVL Series 1.7A~2.3A ; FVT Series 1.1A~2.4A

FLR Series 1.9A~7.3A ; FSR Series 1.2A~4.2A

最大電壓: 12V ~ 30V_{DC}

工作環境溫度: -40°C to 85°C

安規認證: UL (E211981)

*C-UL (E211981)

TÜV (R50004084)

電氣特性 (23°C)

型號	保持電流 I _H , A	跳脫電流 I _T , A	最慢跳脫時間 at 5xI _H , S	工作電壓 V _{MAX} , V _{DC}	最大電流 I _{MAX} , A	消耗功率 Pd, W	電阻範圍		
							R _{MIN} Ohms	R _{MAX} Ohms	R _{1MAX} Ohms
FVL170F	1.70	4.10	5.0	12	100	1.4	0.018	0.032	0.064
FVL175F	1.75	4.20	5.0	12	100	1.4	0.017	0.031	0.062
FVL230F	2.30	5.00	5.0	12	100	1.4	0.012	0.018	0.036
FVT110F	1.10	2.70	5.0	16	100	0.7	0.038	0.070	0.140
FVT170F	1.70	3.40	5.0	16	100	0.7	0.030	0.052	0.105
FVT175F	1.75	3.60	5.0	16	100	0.8	0.029	0.051	0.102
FVT200F	2.00	4.70	5.0	16	100	0.9	0.022	0.039	0.078
FVT210GF	2.10	4.70	5.0	16	100	1.2	0.018	0.030	0.060
FVT240F	2.40	5.90	5.0	16	100	1.0	0.014	0.026	0.052
FSR120F	1.20	2.70	5.0	15	100	1.2	0.085	0.160	0.220
FSR175F	1.75	3.80	5.0	15	100	1.5	0.050	0.090	0.120
FSR200F	2.00	4.40	4.0	30	100	1.9	0.030	0.060	0.100
FSR350F	3.50	6.30	3.0	30	100	2.5	0.017	0.031	0.050
FSR420F	4.20	7.60	6.0	30	100	2.9	0.012	0.024	0.040
FLR190F	1.90	3.90	5.0	15	100	1.2	0.039	0.072	0.102
FLR260F	2.60	5.80	5.0	15	100	2.5	0.020	0.042	0.063
FLR380F	3.80	8.30	5.0	15	100	2.5	0.013	0.026	0.037
FLR450F	4.50	8.90	5.0	20	100	2.5	0.011	0.020	0.028
FLR550F	5.50	10.50	5.0	20	100	2.8	0.009	0.016	0.022
FLR600F	6.00	11.70	5.0	20	100	2.8	0.007	0.014	0.019
FLR730F	7.30	14.10	5.0	20	100	3.3	0.006	0.012	0.015

物理特性:

引線材料: 材質為鍍鎳、引線厚一般約 0.13mm.

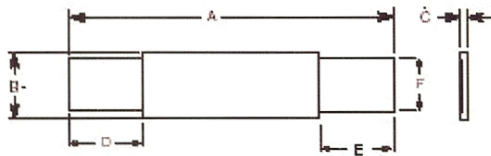
絕緣材料: 多元酯膠帶

PPTC 在不同環境溫度下的 I_H, I_T 電流遞減率

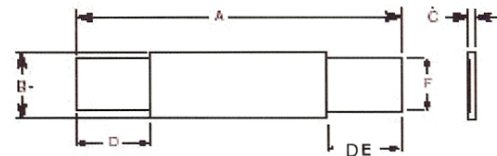
TEMPERATURE	-40°C	-20°C	0°C	23°C	30°C	40°C	50°C	60°C	70°C	85°C
FVL Series	195%	163%	132%	100%	85%	68%	53%	38%	21%	-
FVT Series	172%	149%	127%	100%	90%	77%	65%	53%	41%	23%
FSR Series	153%	135%	118%	100%	92%	85%	77%	69%	62%	50%
FLR Series	147%	130%	115%	100%	93%	86%	78%	71%	64%	56%

附註: 規格如有改變不另行通知

產品外觀尺寸(mm)



Top view
Fig.1



Top view
Fig.2

型號	圖	A		B		C		D		E		F	
		Min	Max	Min	Max	Min	Max	Min	Max	Min	Max	Min	Max
FVL170F	1	20.8	23.2	3.5	3.9	0.5	0.8	4.5	6.5	4.5	6.5	2.4	2.6
FVL175F	1	23.0	24.5	2.9	3.3	0.5	0.8	4.7	7.2	3.8	5.4	2.4	2.6
FVL230F	1	20.9	23.1	4.9	5.3	0.5	0.8	4.1	5.8	4.1	5.8	3.9	4.1
FVT110F	2	23.6	25.6	2.6	2.9	0.5	0.9	7.0	8.0	---	---	2.3	2.5
FVT170F	2	15.4	17.5	7.0	7.4	0.5	0.9	4.0	6.2	---	---	3.9	4.1
FVT175F	2	21.0	23.0	3.5	3.9	0.5	0.9	4.6	6.6	---	---	2.9	3.1
FVT200F	2	21.0	23.0	4.1	4.5	0.5	0.9	3.0	4.8	---	---	2.9	3.1
FVT210GF	2	21.0	23.0	4.9	5.2	0.5	0.9	4.1	5.5	---	---	3.9	4.1
FVT240F	2	23.8	26.0	4.9	5.3	0.5	0.9	3.5	5.5	---	---	3.9	4.1
FSR120F	2	19.9	22.1	4.9	5.2	0.6	1.0	5.5	7.5	---	---	3.9	4.1
FSR175F	2	20.9	23.1	4.9	5.2	0.6	1.0	4.1	5.5	---	---	3.9	4.1
FSR200F	2	21.3	23.4	10.2	11.0	0.5	1.1	5.0	7.6	---	---	4.8	5.4
FSR350F	2	28.4	31.8	13.0	13.5	0.5	1.1	6.3	8.9	---	---	6.0	6.6
FSR420F	2	30.6	32.4	12.9	13.6	0.5	1.1	5.0	7.5	---	---	6.0	6.7
FLR190F	2	19.9	22.1	4.9	5.5	0.6	1.0	5.5	7.5	---	---	3.9	4.1
FLR260F	2	20.9	23.1	4.9	5.5	0.6	1.0	4.1	5.5	---	---	3.9	4.1
FLR380F	2	24.0	26.0	6.9	7.5	0.6	1.0	4.1	5.5	---	---	4.9	5.1
FLR450F	2	24.0	26.0	9.9	10.5	0.6	1.0	5.3	6.7	---	---	5.9	6.1
FLR550F	2	35.0	37.0	6.9	7.5	0.6	1.0	5.3	6.7	---	---	4.9	5.1
FLR600F	2	24.0	26.0	13.9	14.5	0.6	1.0	4.1	5.5	---	---	5.9	6.1
FLR730F	2	27.1	29.1	13.9	14.5	0.6	1.0	4.1	5.5	---	---	5.9	6.1

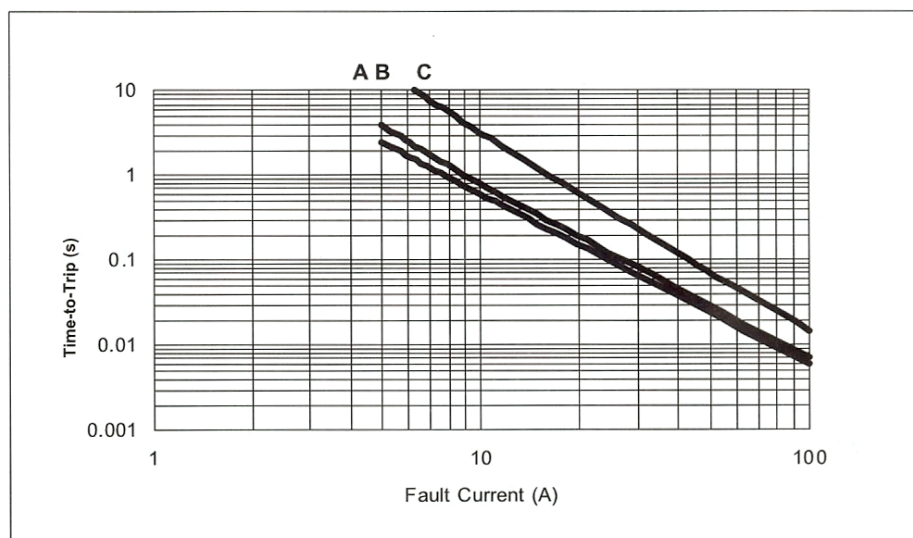
在 23°C動作保護時間曲線表

FVL Series

A= FVL 170F

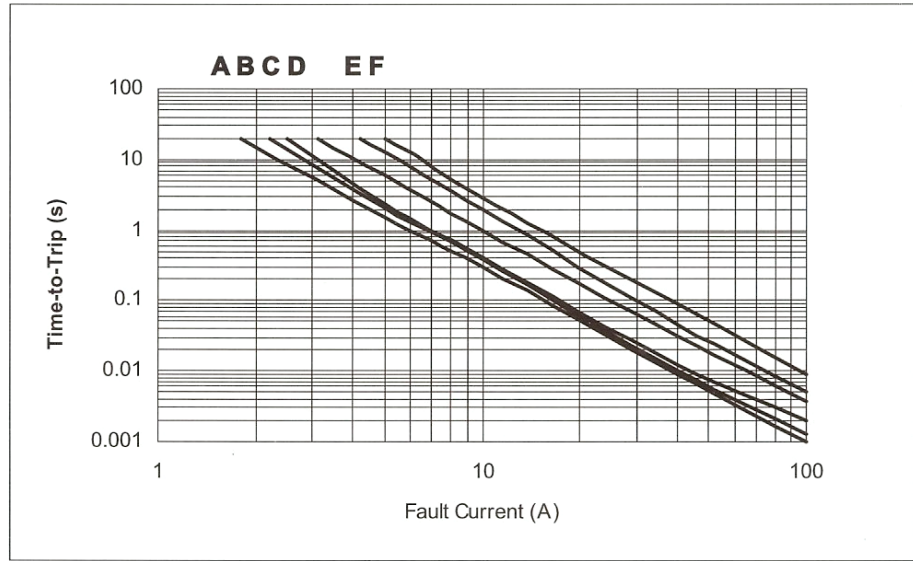
B= FVL 175F

C= FVL 230F



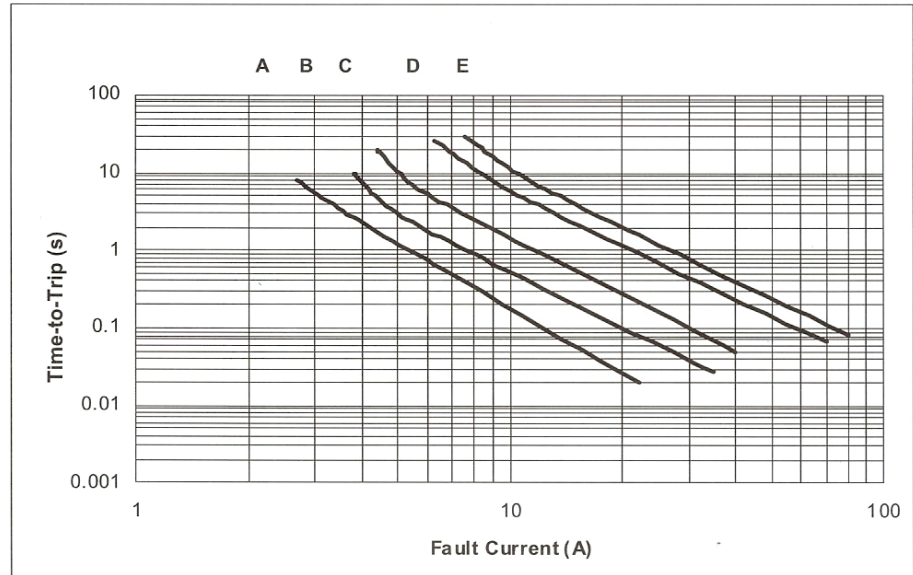
FVT Series

- A= FVT 110F
- B= FVT 170F
- C= FVT 175F
- D= FVT 200F
- E= FVT 210F
- F= FVT 240F



FSR Series

- A =FSR 120F
- B =FSR 175F
- C =FSR 200F
- D =FSR 350F
- E =FSR 420F



FLR Series

- A=FLR 190F
- B=FLR 260F
- C=FLR 380F
- D=FLR 450F
- E=FLR 550F
- F=FLR 600F
- G=FLR 730F

